

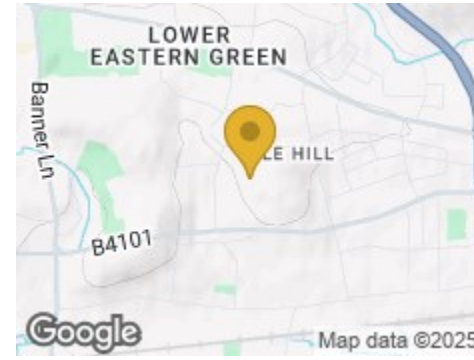
Road Map



Hybrid Map

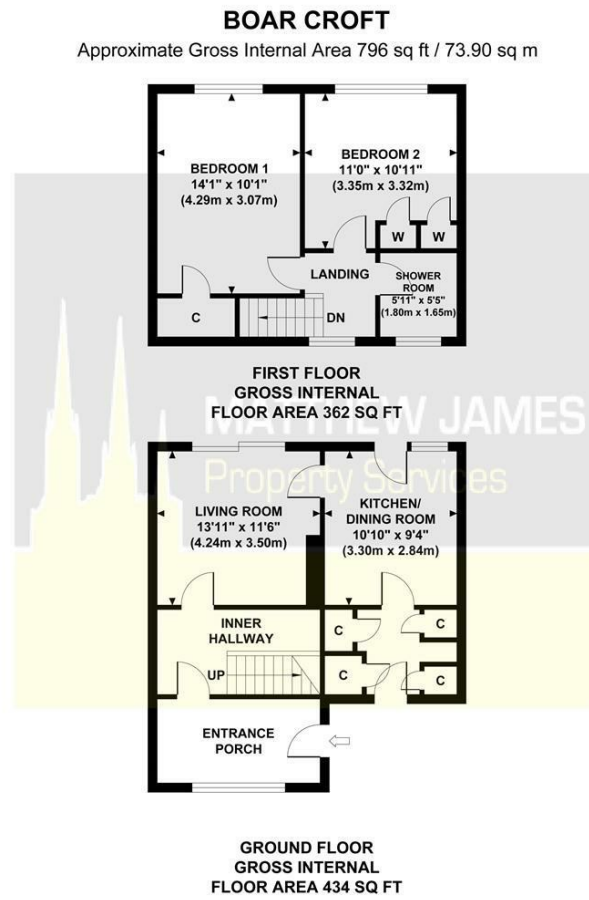


Terrain Map



MATTHEW JAMES
Property Services

Floor Plan



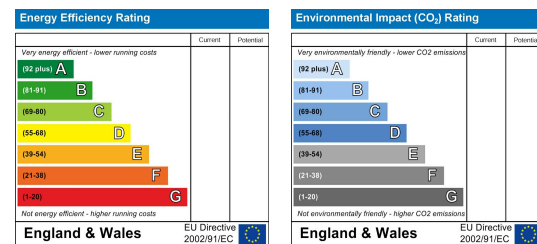
Although every attempt has been made to ensure accuracy, all measurements are approximate and no responsibility is taken for any error, omission, or mid-statement. This floor plan is for illustrative purposes only and not to scale. Measured in accordance to RICS standards.

Viewing

Please contact us on 02477 170170 if you wish to arrange a viewing appointment for this property or require further information.

These particulars, whilst believed to be accurate are set out as a general outline only for guidance and do not constitute any part of an offer or contract. Intending purchasers should not rely on them as statements of representation of fact, but must satisfy themselves by inspection or otherwise as to their accuracy. No person in this firm's employment has the authority to make or give any representation or warranty in respect of the property.

Energy Efficiency Graph



14 Boar Croft

Tile Hill, Coventry CV4 9SJ

Offers Over £160,000



CONTACT INFORMATION

24a Warwick Row, Coventry CV1 1EY
02477 170170

info@matthewjames.uk.com
www.matthewjames.uk.com

Facebook
Twitter

14 Boar Croft

Tile Hill, Coventry CV4 9SJ

Offers Over £160,000



Front Garden

Storm Porch

Inner Hallway

Living Room

13'11 x 11'6

Kitchen/Dining

10'10 x 9'4

Inner Lobby

First Floor Landing

Bedroom One

14'1 x 10'1

Bedroom Two

11 x 10'11

Shower Room

5'11 x 5'5

Rear Garden

